

SUPPLEMENT FOR FACILITATORS



ASSESSMENT TO ACTION.

Taylor Meyer

Monday, November 14, 2011

This report is provided by:

Intesi! Resources
14230 N. 20th Way
Phoenix, AZ 85022
Phone: 602-482-6422
Toll Free: (866) 3INTESI or 1-866-346-8374
Info@IntesiResources.com
www.IntesiResources.com



UNDERSTANDING. INSIGHT. RESULTS.

by Inscape Publishing



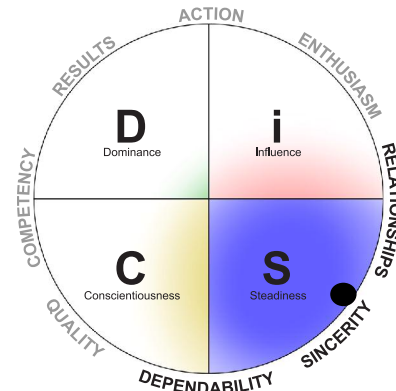
Supplemental Data for Taylor Meyer: S Style

Supplement for Facilitators

Purpose

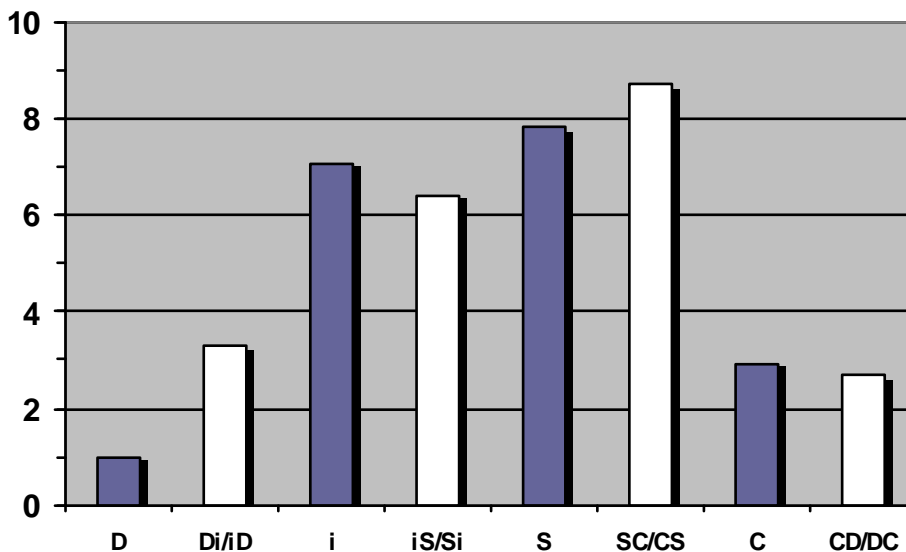
This page is meant to help facilitate a richer discussion about Taylor's DiSC® style by providing more detailed data about his assessment. In addition to his DiSC style and dot, this page provides Taylor's scores for the eight DiSC scales, as well as a list of the assessment items that he rated highly that aren't typical for someone with his S style.

Understanding Taylor's scores on the eight scales can help to explain the location of his dot. For instance, people whose dots fall toward the center of the circle are likely to have several scales that are equally high, whereas people whose dots are close to the edge are likely to have one or two scales that are much higher than the others.



Because his dot is in the S region, this is his primary style.

Breakdown by DiSC® Scale



Pictured at left are Taylor's scores on each of the eight DiSC scales. Although his DiSC style is S, his unique personal style includes elements of all eight scales. This is important because if he scored high on a scale other than the S scale, he may find that certain pieces of feedback in his Everything DiSC® report fit him better than others.

Unexpected Items for Taylor's S DiSC Style

The following items were rated highly by Taylor even though these items are not correlated with his S style. This list can help the facilitator and Taylor explore aspects of his personality that may not be consistent with the S style. The parentheses show the rating given to each item on a five-point scale.

- Magnetic (4)